

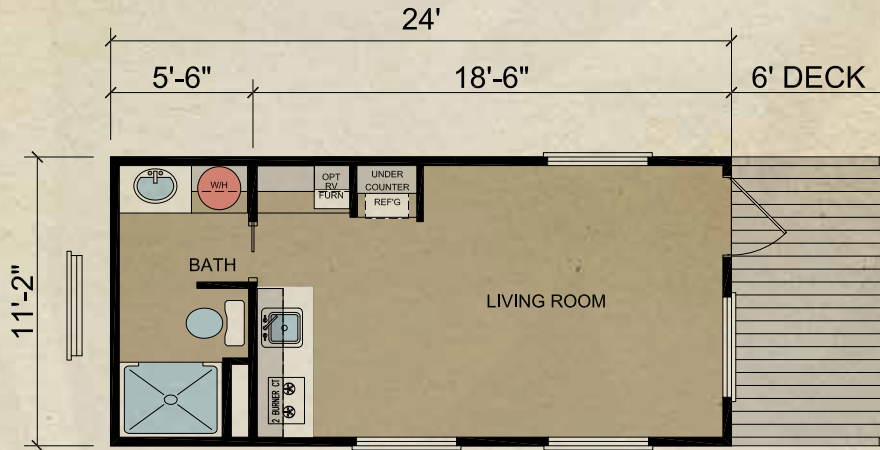


Athens
PARK HOMES

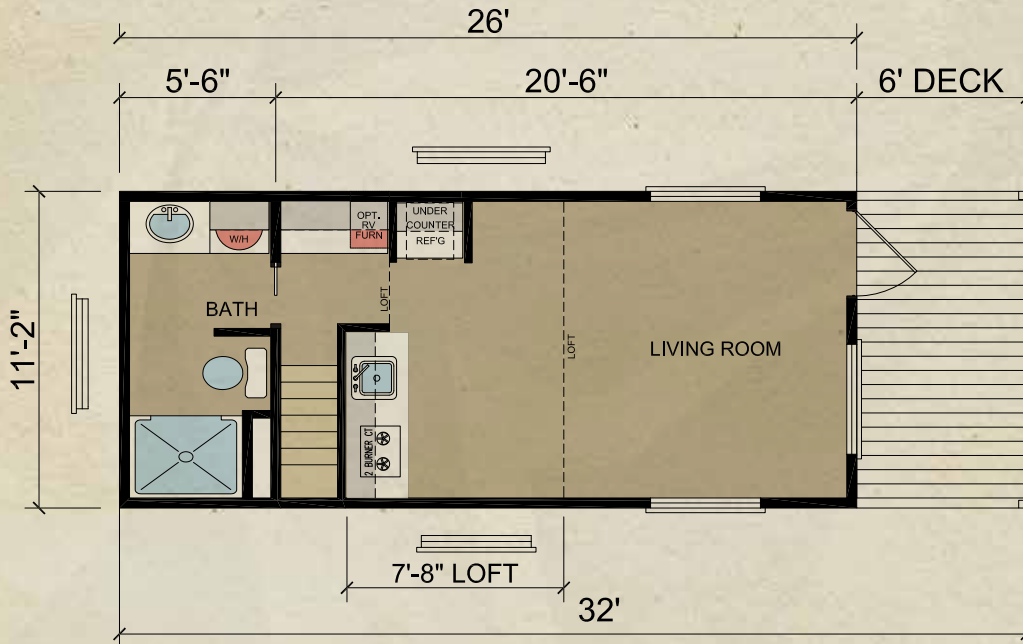
Cottages Series



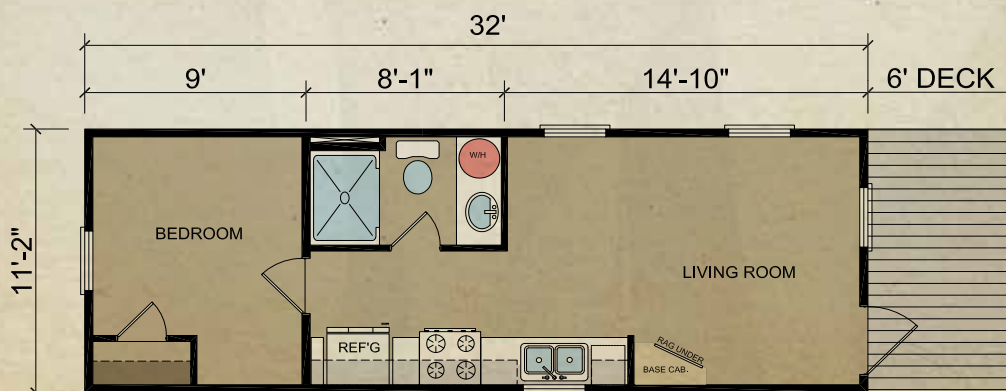
Model 130 | 275 sq. ft.



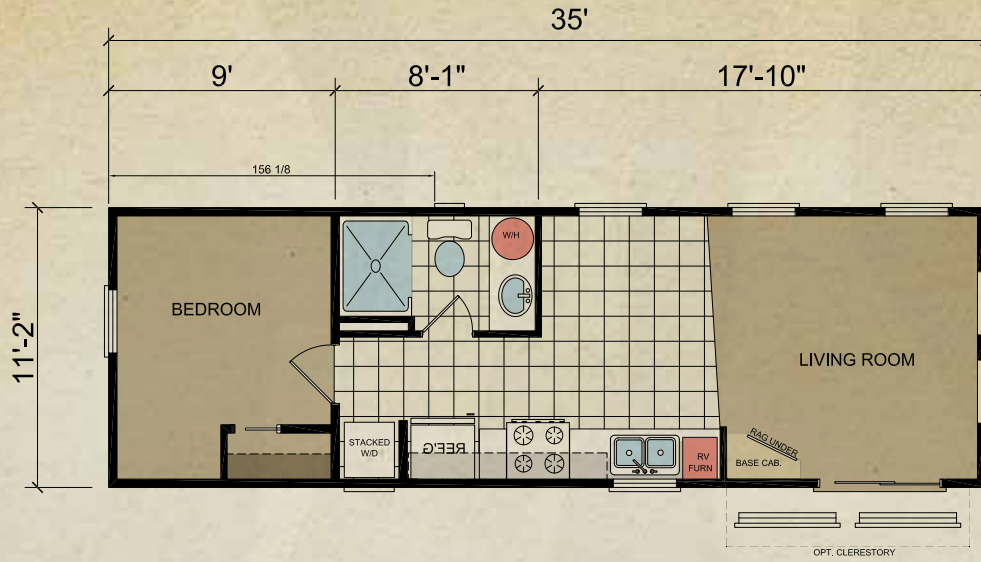
Model 131SLFD | 298 sq. ft.



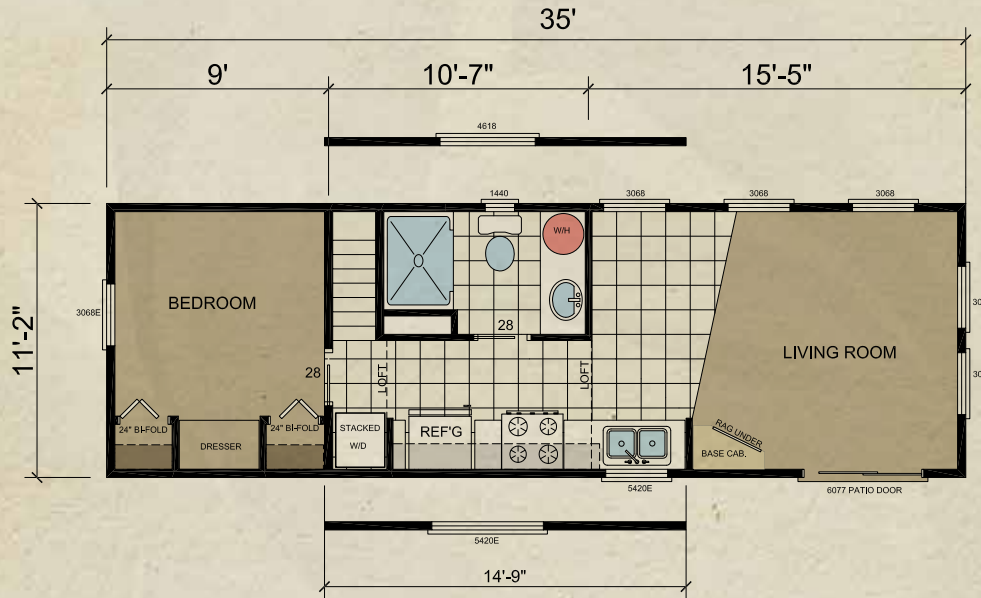
Model 104FD | 358 sq. ft.



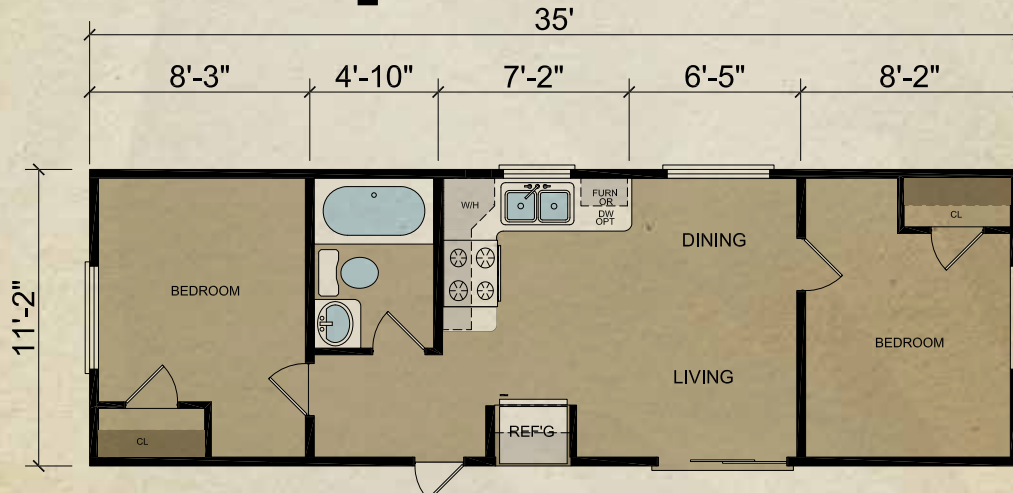
Model 105 | 399 sq. ft.



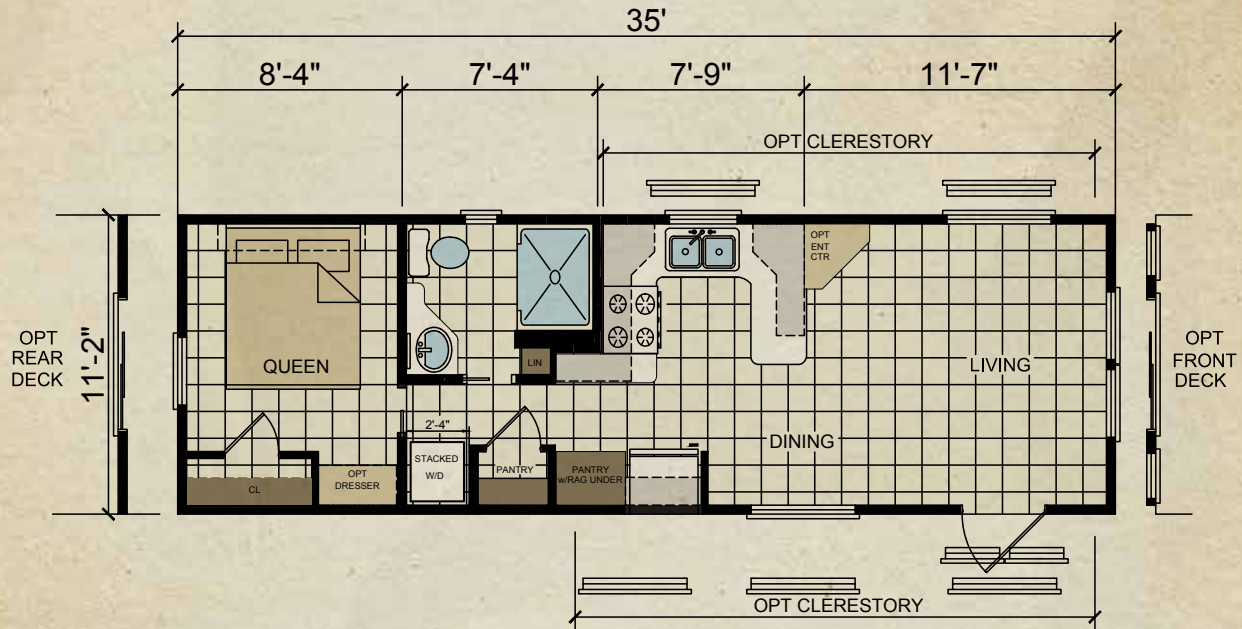
Model 105SL | 399 sq. ft.



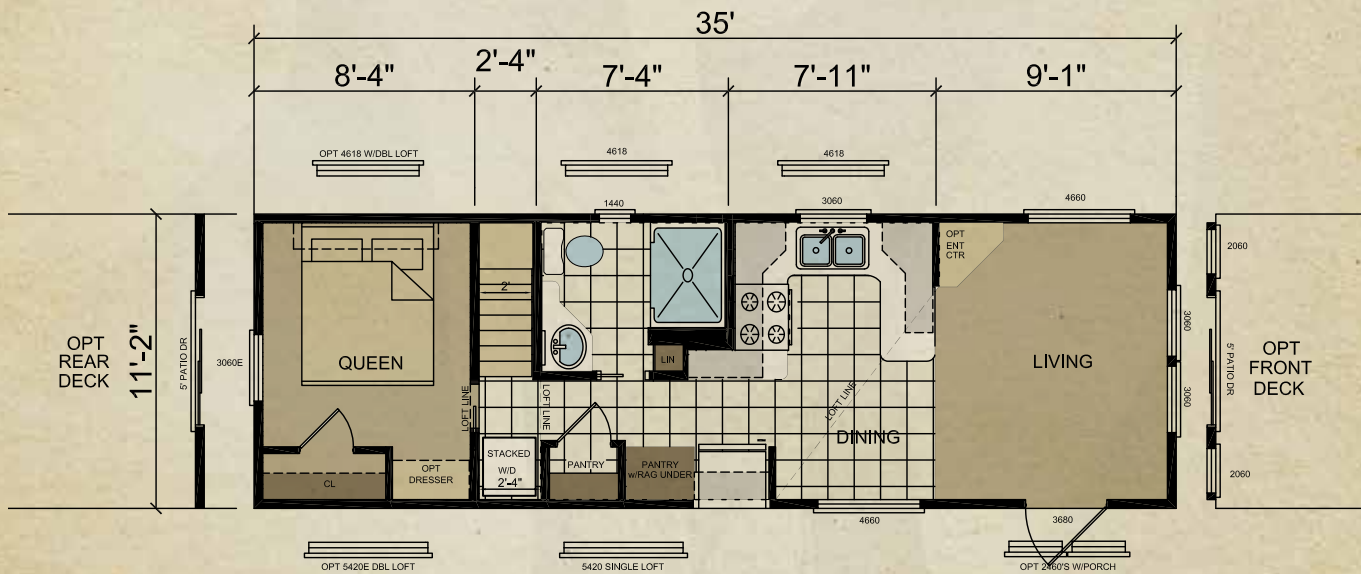
Model 143 | 399 sq. ft.



Model 180 | 399 sq. ft.



Model 180SL | 399 sq. ft.



Model 160FD | 399 sq. ft.



Model 160SLFD | 399 sq. ft.



Cottage Series Standard Features

Energy-Saving Comfort Features:

- Insulated Single-Hung Windows
- 36x80 Nine-Lite Steel Front Door
- 24x76 Gunslot Rear Door - Some Models
- R-22 Insulation in Roof
- R-11 Insulation in Sidewalls & Floors
- Vented Attic with Vapor Barrier
- Fire Extinguisher
- Energy-Saving Housewrap Around Home

Heavy-Duty Exterior Construction Features:

- 6-Foot Covered Front Deck - Most Models
- Heavy Asphalt/Fiberglass Shingles
- 2x6 Floor & 2x4 Sidewall Construction - 16" O.C.
- Trussed Roof Rafters
- Full-Length 10" Steel "I" - Beam Frame
- Fiber-Cement Siding or Vinyl (Some Plants)
- High-Density Rodent-Proof Underbelly
- Detachable Hitch

Heavy Duty Interior Construction Features:

- 90" Sidewall Height with Extra-High Vaulted Ceiling- Most Plants
- MDF Cabinet Doors & Drawer Fronts
- Hidden Cabinet Door Hinges
- Premium Metal Drawer Guides & Rollers
- OSB T&G Floor Decking
- Sealed OSB at Entry Doors & Plumbing Locations
- Lined Overhead Cabinets in Kitchen

Decorator Features:

- Tape & Textured Sheetrock Walls
- Textured Ceiling
- China Lavatory Sink in Bath
- Deluxe Overhead Lighting
- Attractive Patio Light
- Deluxe Valances
- High-Pressure Laminate Countertops
- Laminate Edging & Backsplash in Kitchen
- Blinds on Windows Throughout

Convenience Features:

- ANSI 119.5 Coded - RVIA Inspected
- 50-Amp Electrical Service with Pigtail
- Undercounter Refrigerator - Some Models
- 18 cu.ft. Refrigerator - Some Models
- One-Piece 48" Fiberglass Shower - Most Models
- 20-Gallon Electric Water Heater
- No Wax Linoleum Flooring Throughout
- Acrylic Kitchen Sink with Single Lever Faucet & Sprayer
- Metal Faucet in Bath
- Porcelain House-Type Toilet
- Flip Down Sink Trays in Kitchen
- 2-Burner Electric Cooktop - Some Models
- Full-Size Range - Some Models
- Power Range Hood & Light - Most Models
- Exterior GFCI 110 Volt Receptacle
- Smoke Detector
- Shut-off Valves Throughout

Popular Options:

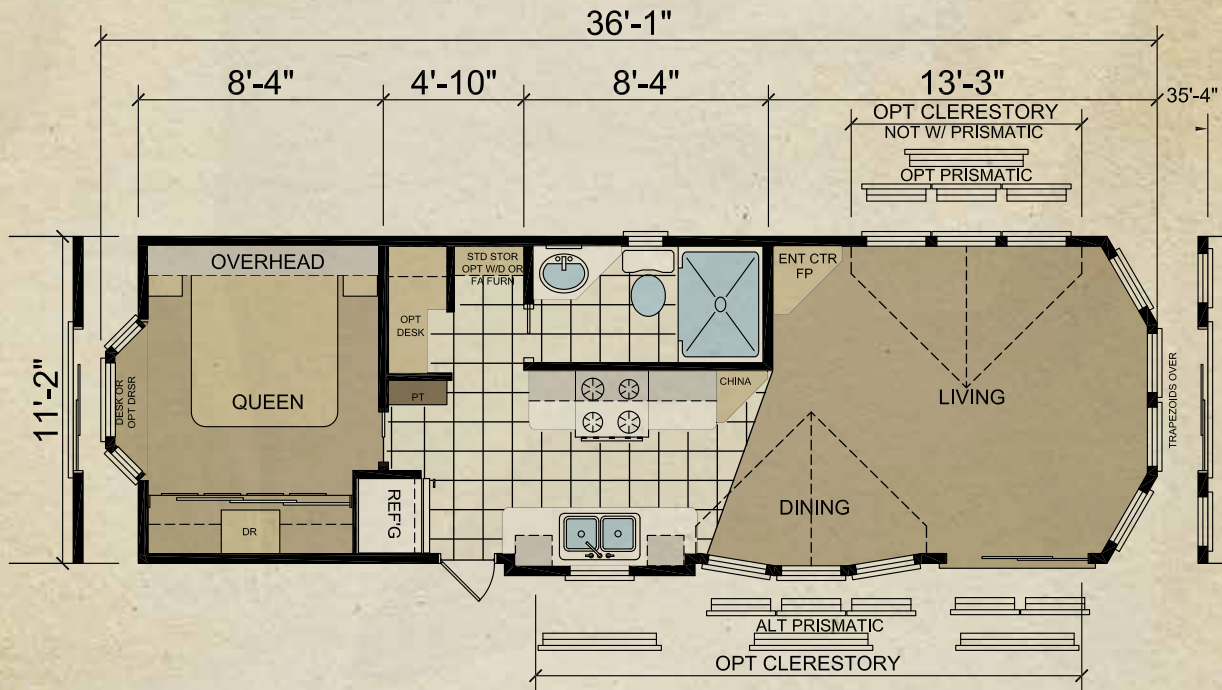
- Alternate Kitchen Package
- Microwave Oven
- Washer/Dryer
- Clerestory Dormers
- Cabin Package
- Lofts
- Electric Fireplace

Disclaimer: Features may change per manufacturing plant location.

Royal Series



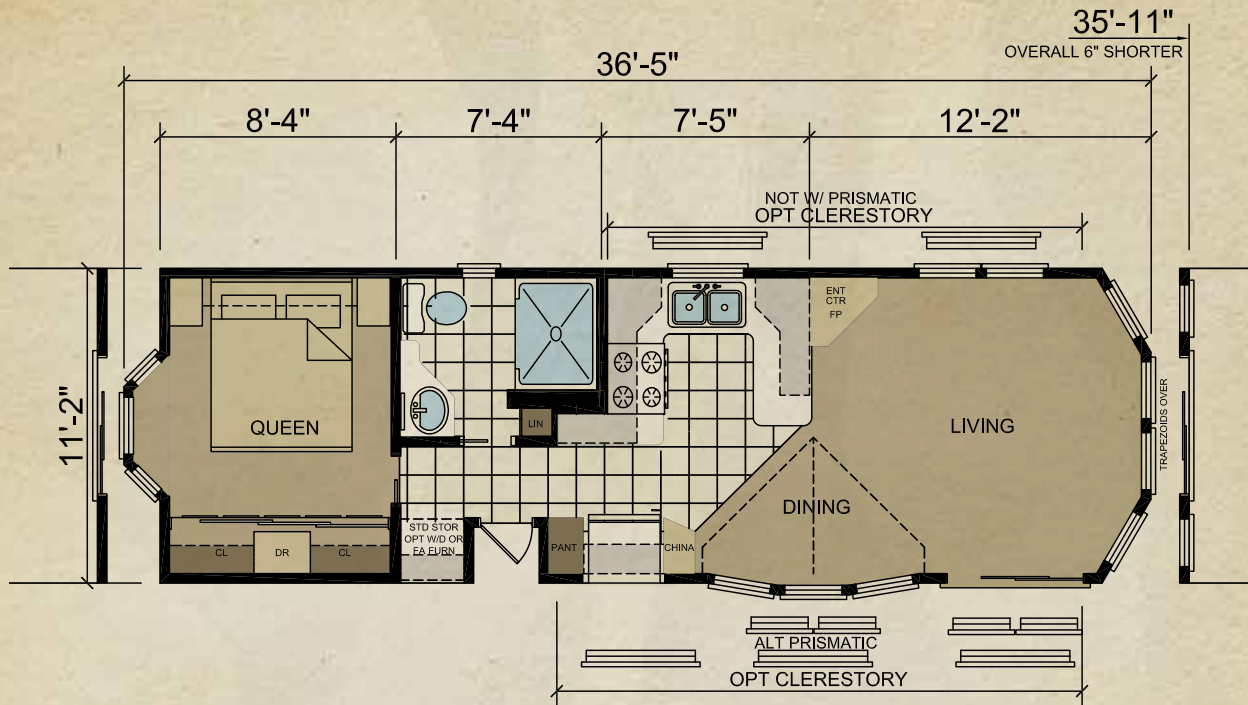
Model 201 | 399 sq. ft.



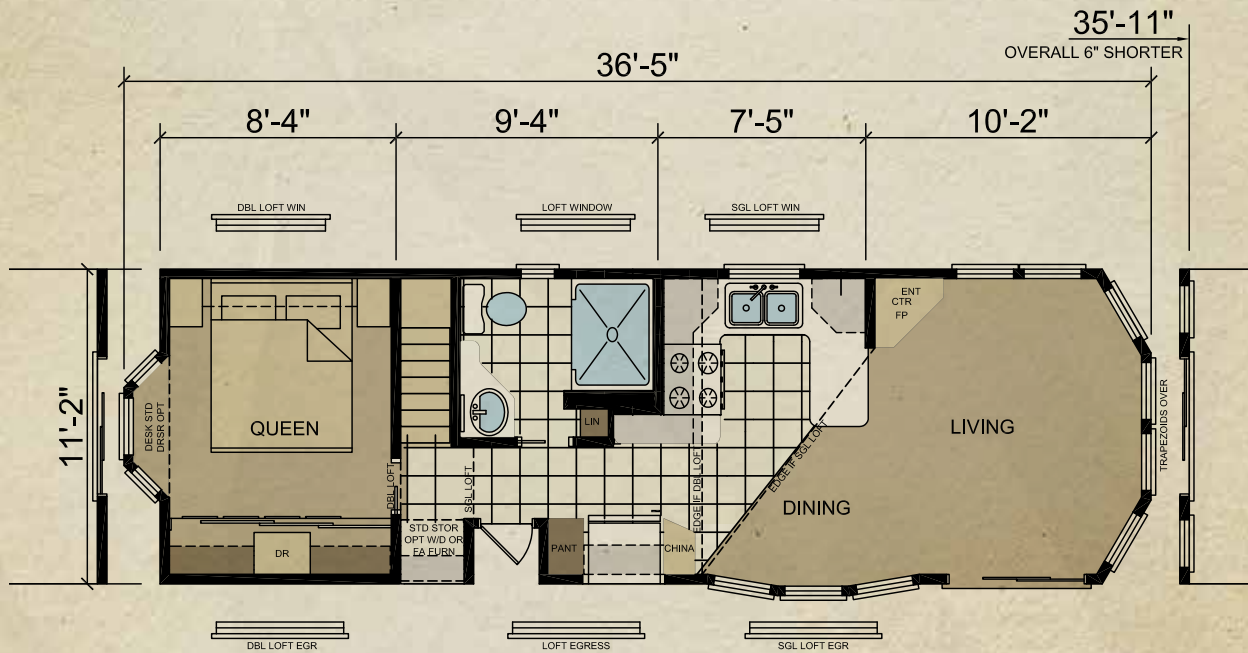
Model 201SL | 399 sq. ft.



Model 202 | 399 sq. ft.

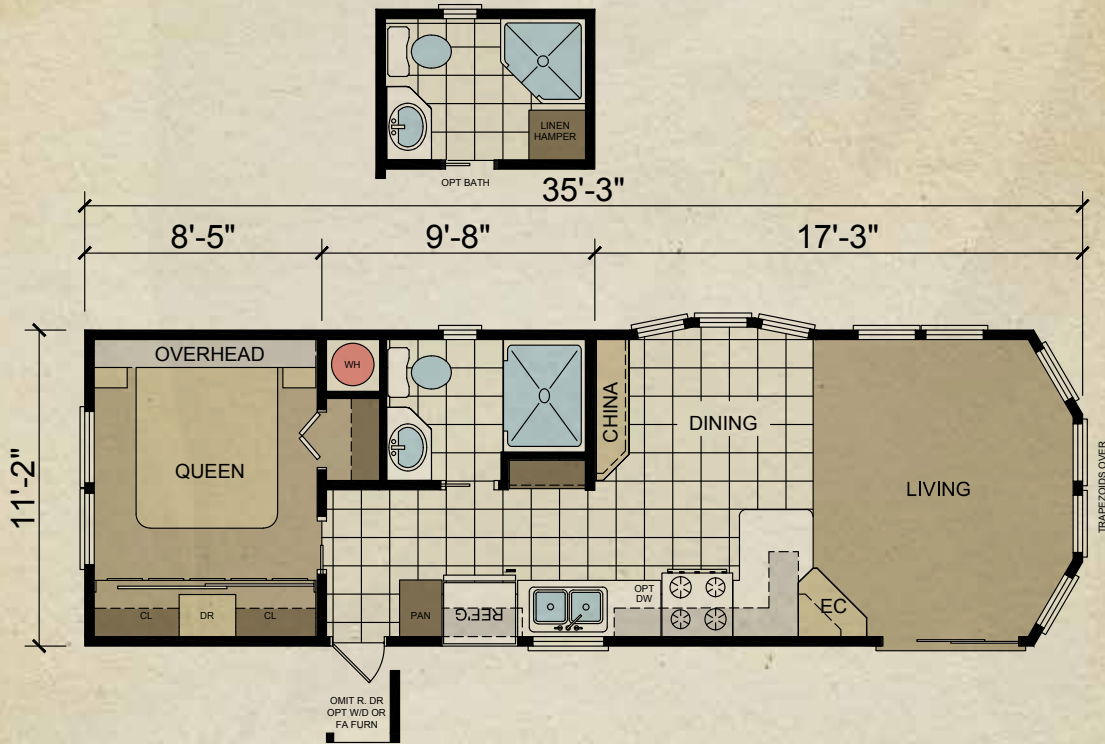


Model 202SL | 399 sq. ft.



SINGLE AND DOUBLE LOFT OPTION

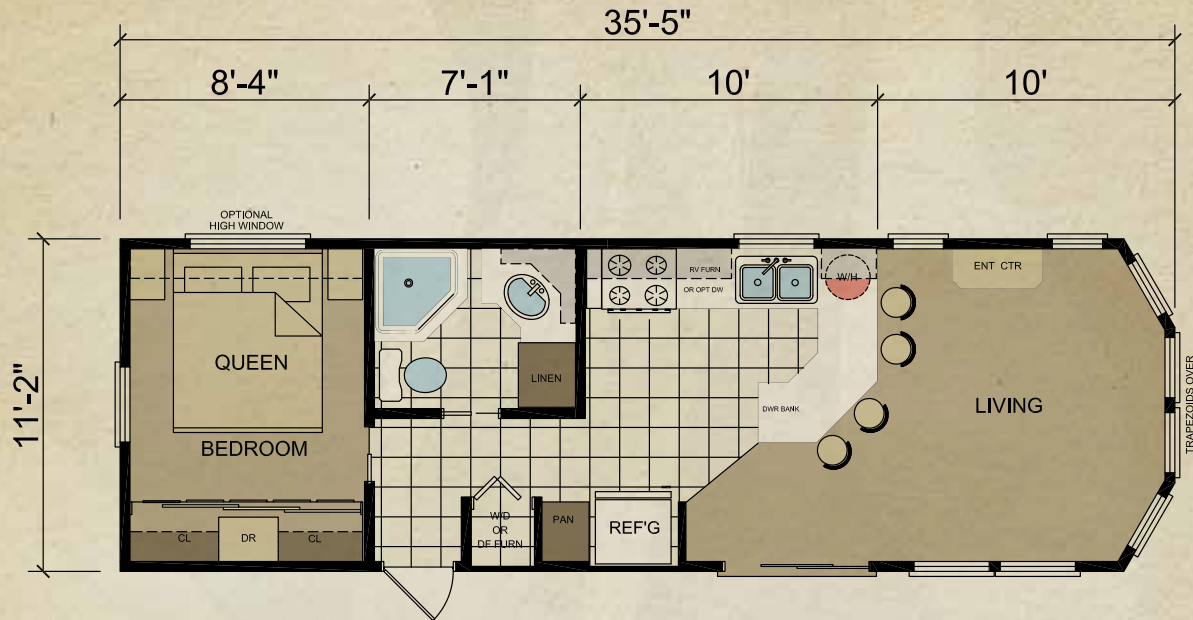
Model 207 | 399 sq. ft.



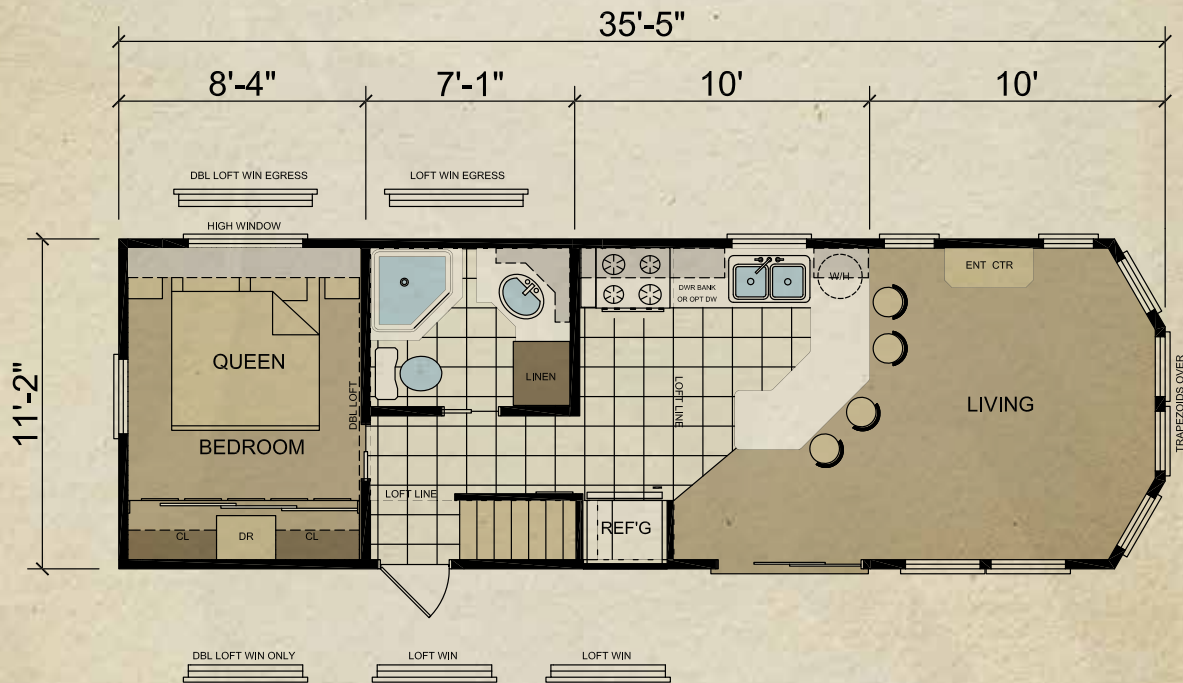
Model 207SL | 399 sq. ft.



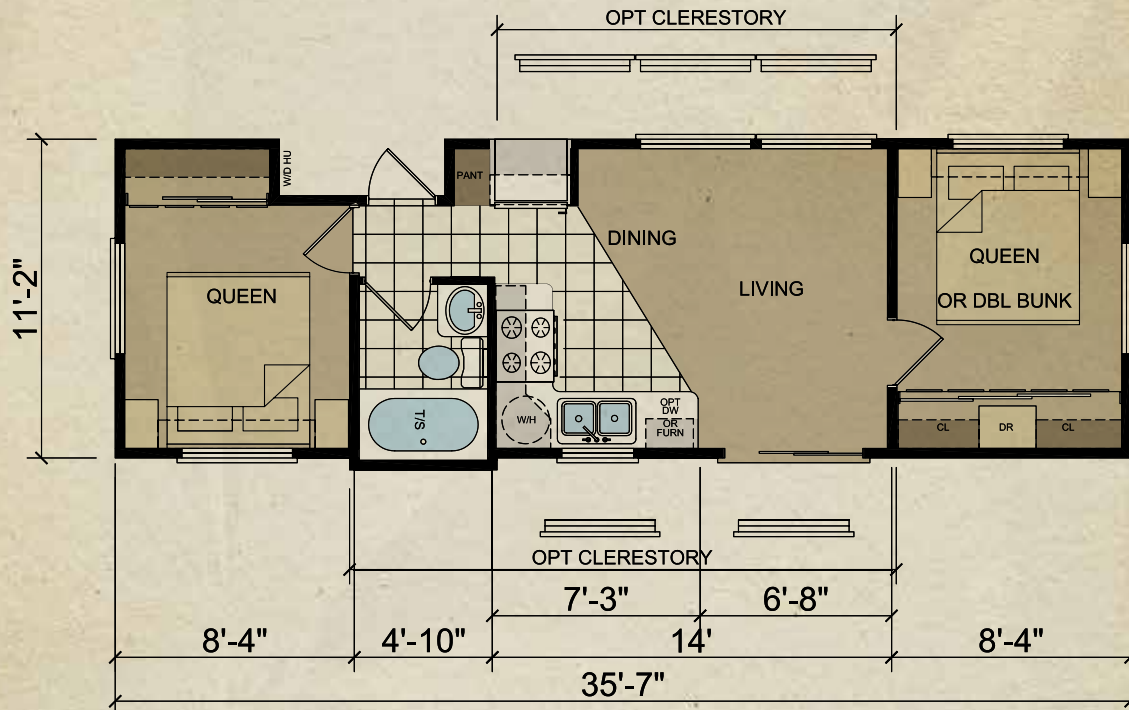
Model 231 | 399 sq. ft.



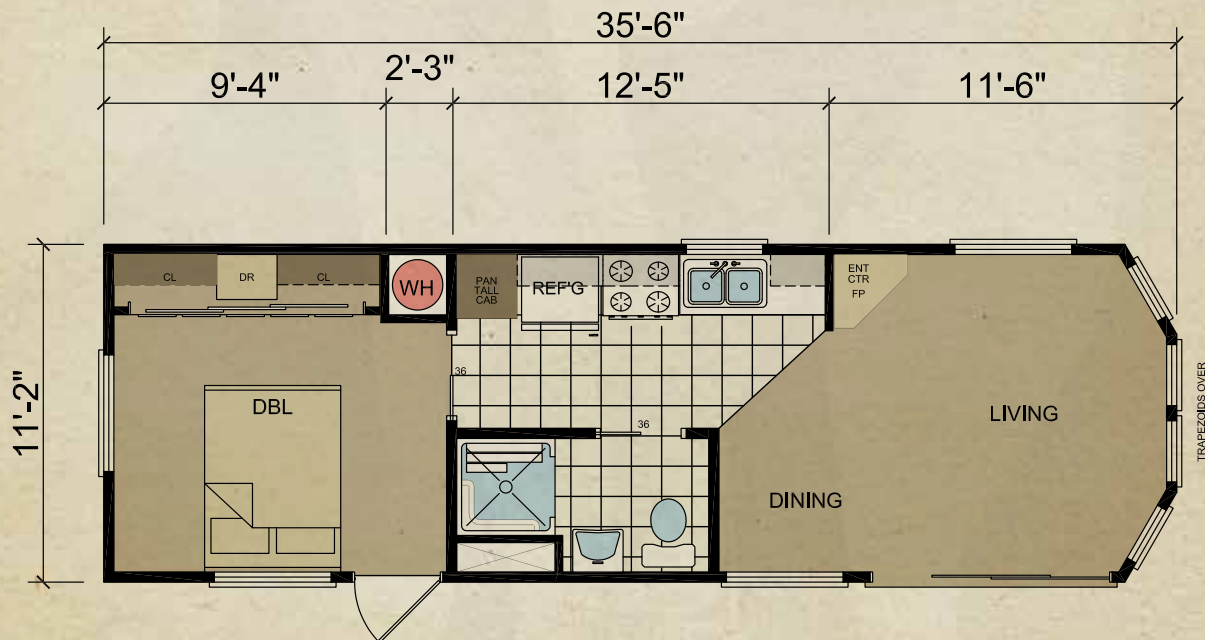
Model 231SL | 399 sq. ft.



Model 212 | 399 sq. ft.



Model 219 | 399 sq. ft.



Model 239SL | 399 sq. ft.



Disclaimer:

Due to continuous product development and improvement, prices, specifications, and materials are subject to change without notice or obligation. Square footage and other dimensions are approximate. Included images may be artist renderings and are not intended to be an accurate representation of the home. Renderings and floorplans may be shown with optional features or third-party additions. Floor plans, elevations and interior features may vary between the different manufacturing plants that build these models.

Royal Series Standard Features

Energy-Saving Comfort Features:

- Insulated Single-Hung Windows
- Insulated Patio Door
- RV-Type Rear Door with Screen & Deadbolt - Some Models
- 6'4" Entry Door Heights
- R-22 Insulation in Roof
- R-11 Insulation in the Sidewalls & Floors
- Vented Attic with Vapor Barrier
- Fire Extinguisher
- Energy Saving Housewrap Around Home
- Ceiling Fan in Living Room with Light

Heavy-Duty Exterior Construction Features:

- Heavy Asphalt/Fiberglass Shingles
- 2x6 Floor & 2x4 Sidewall Construction - 16" O.C.
- Trussed Roof Rafters
- Full-Length 10" Steel "I" - Beam Frame
- Fiber-Cement Siding or Vinyl (Some Plants)
- High-Density Rodent-Proof Underbelly
- Detachable Hitch
- 4 Large Window Front Angle Bay

Heavy-Duty Interior Construction Features:

- Beautiful 5-Piece Wood Cabinet Doors & Drawer Fronts
- Hidden Cabinet Door Hinges
- Premium Metal Drawer Guides & Rollers
- OSB T&G Floor Decking
- Sealed OSB at Entry Doors & Plumbing Locations
- Rear Bay Window in Bedroom - Most Models
- Smooth Sliding & Room-Saving Pocket Doors - Most Models
- Lined Overhead Cabinets in Kitchen

Decorator Features:

- Tape & Textured Sheetrock Walls
- Textured Ceiling
- Attractive Towel Bar & Tissue Holder - Shipped Loose
- Mirrored Wardrobe Doors
- Drawers Below Wardrobe
- Premium Chandelier in Dining Room
- China Lavatory Sink in Bath
- 90" Sidewall Height with Extra-High Vaulted Ceiling
- Popular Side Bay (Per Model)
- Beautiful Glass Inserts in Overhead Cabinets (Per Model)

Decorator Features (continued):

- Deluxe Overhead Lighting
- Attractive Patio Light
- Plush-Style Carpet with High Density Carpet Pad
- Premium Decorator Drapes & Deluxe Valances
- Vertical Blind with Valance at Patio Door
- Deluxe Medicine Cabinet in Bathroom
- High-Pressure Laminate Countertops with Ceramic Edging
- Ceramic Backsplash in Kitchen & Bath
- Blinds in Windows Throughout

Convenience Features:

- ANSI 119.5 Coded & Inspected - RVIA Approved
- 50 Amp Electrical Service
- 18 cu. ft. Double Door Frost Free Refrigerator
- One-Piece 48" Fiberglass Shower - Most Models
- 20-Gallon Electric Water Heater
- No Wax Flooring
- Acrylic Kitchen Sink with Single-Lever Faucet & Sprayer
- Metal Faucet in Bath
- Porcelain House-Type Toilet
- Flip Down Sink Trays in Kitchen
- Deluxe 30" Free-Standing Gas Range
- Power Range Hood & Light
- Entertainment Center (Per Print)
- Exterior GFCI 110 Volt Receptacle by Patio Door
- Smoke Detector
- Shut-off Valves Throughout
- 2 Conveniently Located TV & Phone Jacks
- Dual Reading Lights over Bed

Popular Options:

- Upgrade Carpet
- Porches
- 2nd or 3rd Ceiling Fan
- Skylights
- 8/12 Roof Pitch
- Lofts
- Cabin Package
- Microwave Oven
- Washer/Dryer
- Electric Fireplace
- Clerestory Dormers
- Electric Fireplace

Disclaimer: Features may change per manufacturing plant location.

Athens Park Homes

Need to get away?

Considering a break from the everyday hectic lifestyle? Looking for a hideaway to enjoy a little peace and relaxation? Whether your favorite weekend escape is to the lake, mountains or woods, a Getaway Cottage from Athens Park Homes will make the perfect retreat. You'll enjoy your home away from home so much ... you may not want to leave.

Green Features

All Athens Park Home RV's have a look that can't be duplicated. From the high textured ceilings to the textured and painted walls with rounded corners, our cottages will satisfy your need for comfort and convenience while providing extraordinary eye appeal. Helping to protect our environment, every Athens Park Home RV comes standard with green building features such as energy-conserving dual pane windows, insulated doors, energy-saving appliances and a heavy insulation package. And, each home is protected by a Champion warranty.

Make Some Memories

With a new Park Model RV from Athens Park Homes, you'll be able to sit back, relax, and enjoy quality time with your family and friends. It will keep you coming back to your favorite vacation spot year after year ... and make your holidays and weekend getaways a time to remember.

Proudly Built at these Locations:

Athens, Texas
800.738.0392

Salisbury, North Carolina
800.749.5203

Chandler, Arizona
877.738.8838

Sangerfield, New York
800.937.3911

Lake City, Florida
800.589.8942

Weiser, Idaho
877.540.4906

Lindsay, California
800.451.4951

York, Nebraska
800.752.7906

www.athensparkhomes.com



1013XXXX